

### COSTUMES

The story of David takes place around 1000 B.C.E.

Though historic evidence of the type of costuming is limited to only a few designs, it nevertheless appears that bright solid colors, embroidery and jewelry were used in abundance.

The costumes are all basically of the same cut with variations in color, length and decoration. The robe has a square neck opening and a cap sleeve or, in some cases, a longer kimono-type sleeve. The edges are trimmed with embroidery or decorative braid. The men might wear a shirt (same cut as the robe) and a "warrior's kilt"--a wrapped skirt with plaits in the front and also trimmed with embroidery.

Samuel is an old man with a full beard and long grey hair. As his priorities are not of the material world, his costume should be a simple robe and tunic in neutral greys.

All the members of Saul's court should be dressed in royal purple and blue. The narrator/scribe is also an older man with a full beard, long greying hair but no mustache. He wears a long blue robe covered by a purple tunic. Both pieces are tied at the waist with a richly colored belt and sash (Exodus 28:31-35). He must also wear a gold breast-plate set with twelve different colored stones (Exodus 28:15-28).

Saul's costume is of rich materials but he is still a soldier. His robe is short and closely fitted. He, too, has a beard with no mustache and his hair is pulled back and woven, not just braided. He wears a gold headband, some

jewelry, sandals, and a small sword.

Jonathan wears a white robe trimmed in blue and purple covered by a blue tunic. Both pieces are tied with a belt. He must also wear a removable blue cape which he gives to David immediately after the "Final Duet".

Saul's daughter wears a light purple or pink dress trimmed with lavish embroidery. Her long hair is pulled back and woven or plaited in the Canaanite fashion. Her crown is "pill box" style and decorated to match her dress. She is barefoot and wears much jewelry.

Saul's female servants are in black, trimmed in purple. Saul's soldiers are in white, trimmed in purple.

David is of the earth. He tended sheep during his youth and is costumed accordingly. His shirt and kilt are of rough brown fabric trimmed in green and tied with a leather belt. His hair is wild and curly and held with a leather headband.

The townspeople and David's soldiers are dressed in the same colors: browns, greens, and oranges. Some can be dressed simply, others more richly, so long as the colors remain congruent.

Goliath is in black with brass armour. He wears a feathered helmet which was common to the Philistines in battle.

The Philistines (no drawing) should also be in black and brass armour.

The fabrics and colors are important in defining each group of characters. As you can see the royal family and

their household are dressed in purples, blues, and scarlet  
whereas David, his troops, and the townspeople are in brown,  
green and orange.

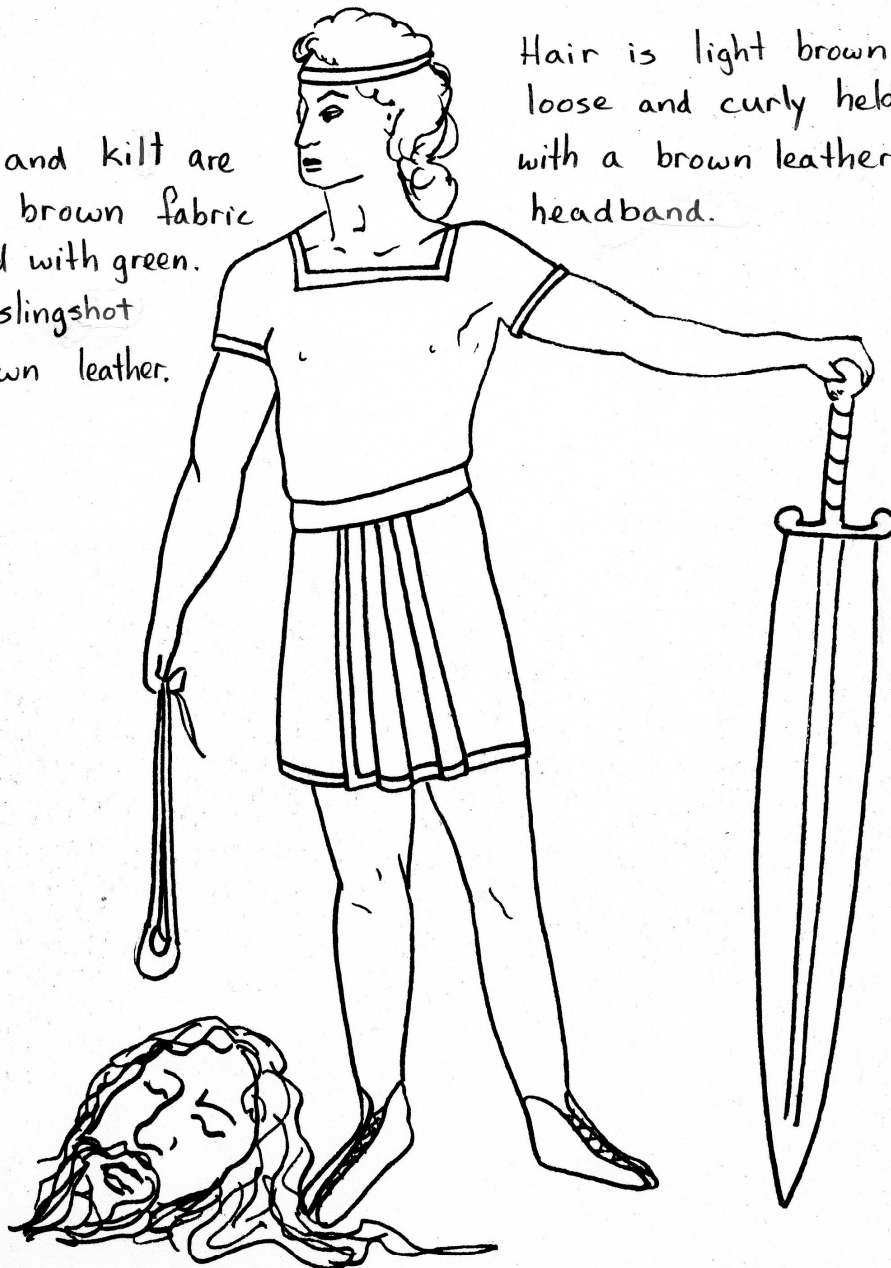
Within each category there should be a wide range of  
textures, shades and hues. The exclusion of certain colors  
is to add definition, not to create monotony.

# DAVID

Shirt and kilt are  
rough brown fabric  
trimmed with green.

Belt + slingshot  
are brown leather.

Hair is light brown,  
loose and curly held  
with a brown leather  
headband.





# SCRIBE



black greying hair  
pulled back in a  
pony-tail. Royal blue  
headband.

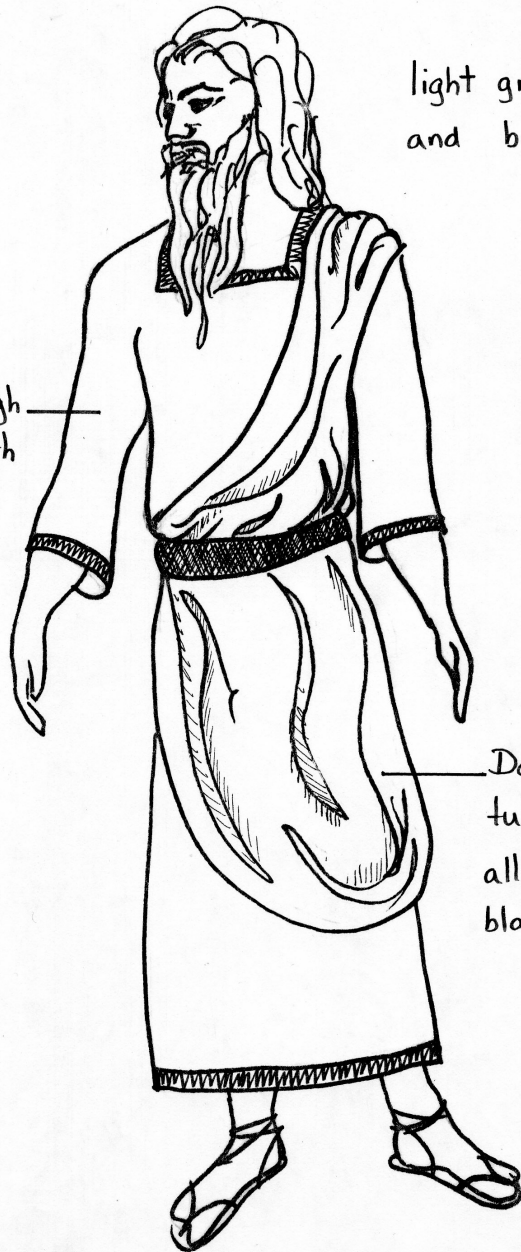
Royal blue robe, heavy  
texture, trimmed at  
neck, wrist and hem  
with blue, purple and  
scarlet. The belt  
and sash also blue  
purple and scarlet.

The tunic is purple  
perhaps velvet.

# Samuel

light grey hair  
and beard

light grey, rough  
fabric robe with  
black trim at  
neck, wrist and  
hem.

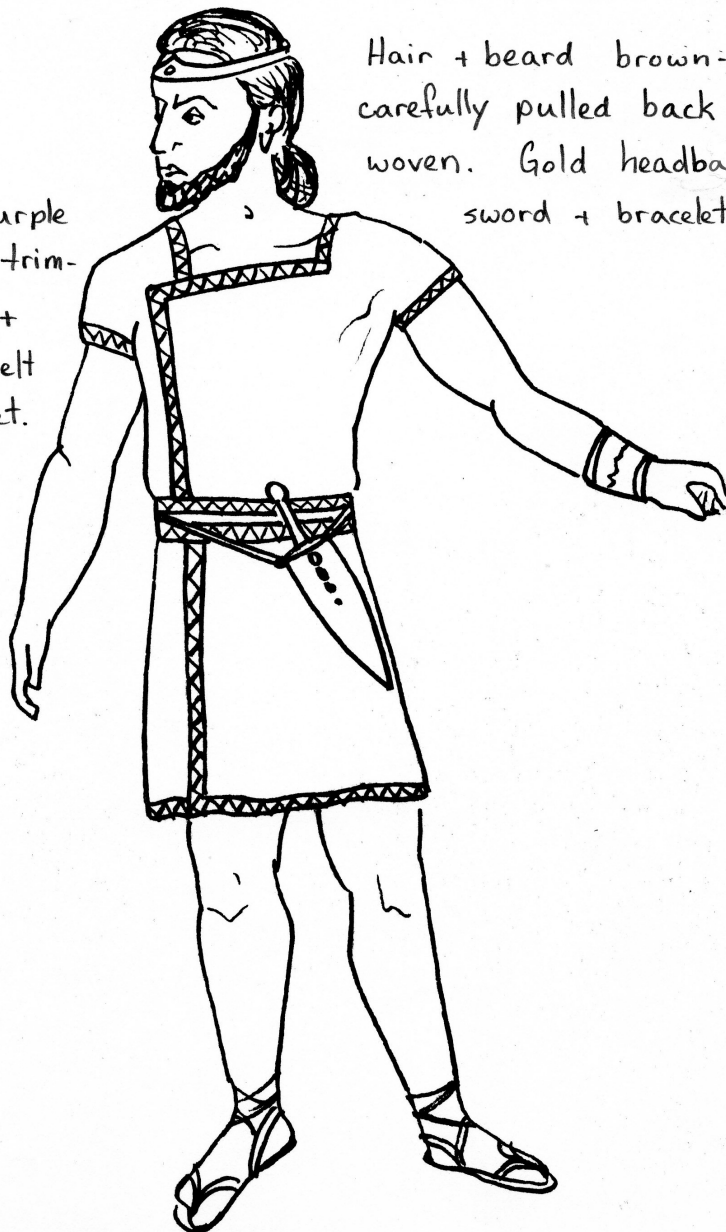


Darker grey  
tunic over robe  
all tied with a  
black belt.

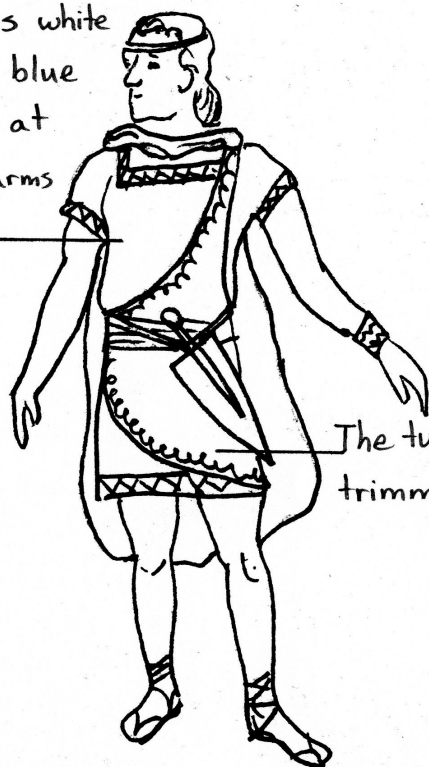
# Saul

Robe a rich purple textured fabric trimmed with gold + scarlet. The belt also gold + scarlet.

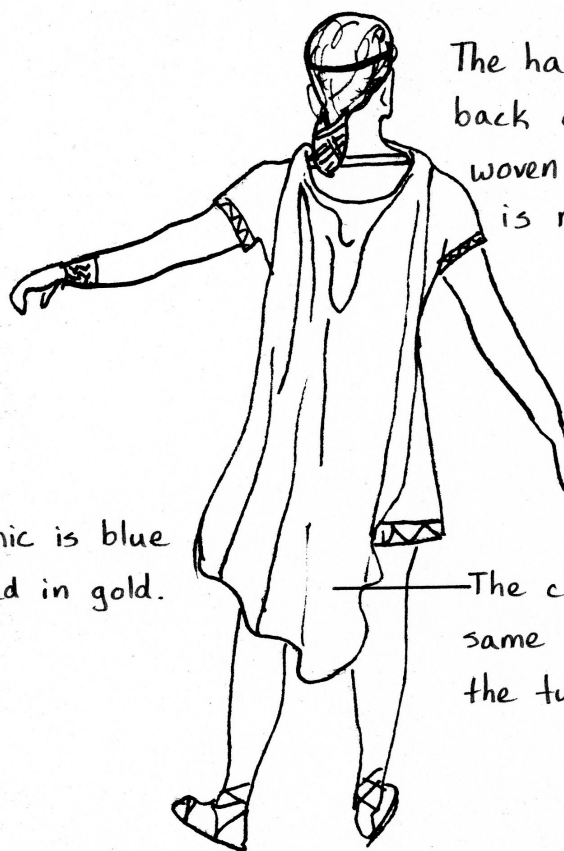
Hair + beard brown-black carefully pulled back and woven. Gold headband, sword + bracelet



The robe is white  
trimmed in blue  
and purple at  
the neck, arms  
and hem.



The tunic is blue  
trimmed in gold.



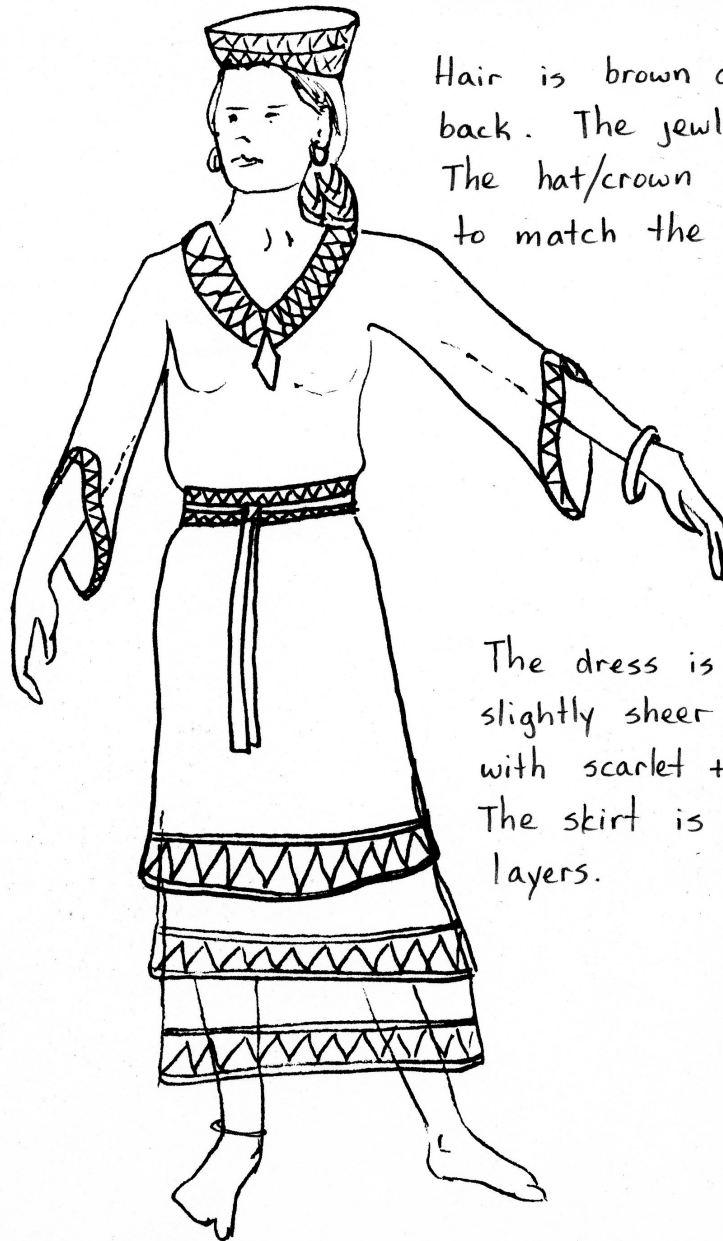
The hair is pulled  
back and carefully  
woven. The headband  
is royal blue.

The cloak is the  
same fabric as  
the tunic

Jonathan

## Saul's daughter

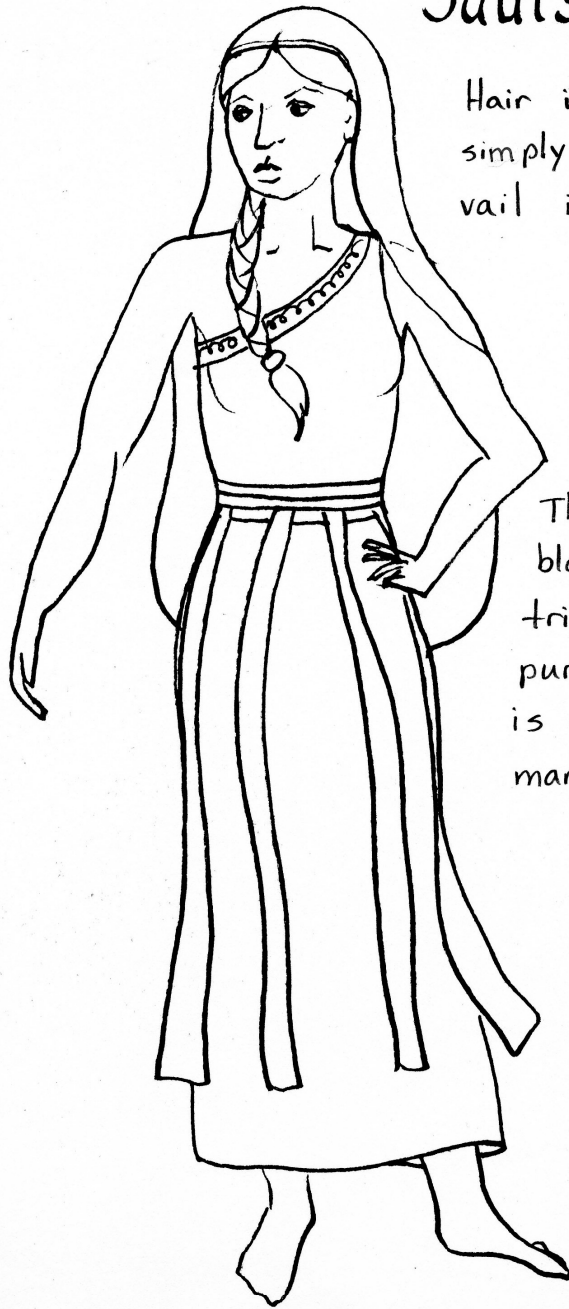
Hair is brown and pulled back. The jewelry is gold. The hat/crown is trimmed to match the dress.



The dress is pink and slightly sheer trimmed with scarlet + purple. The skirt is in three layers.

## Saul's servants

Hair is brown and simply braided. The vail is pink + sheer.



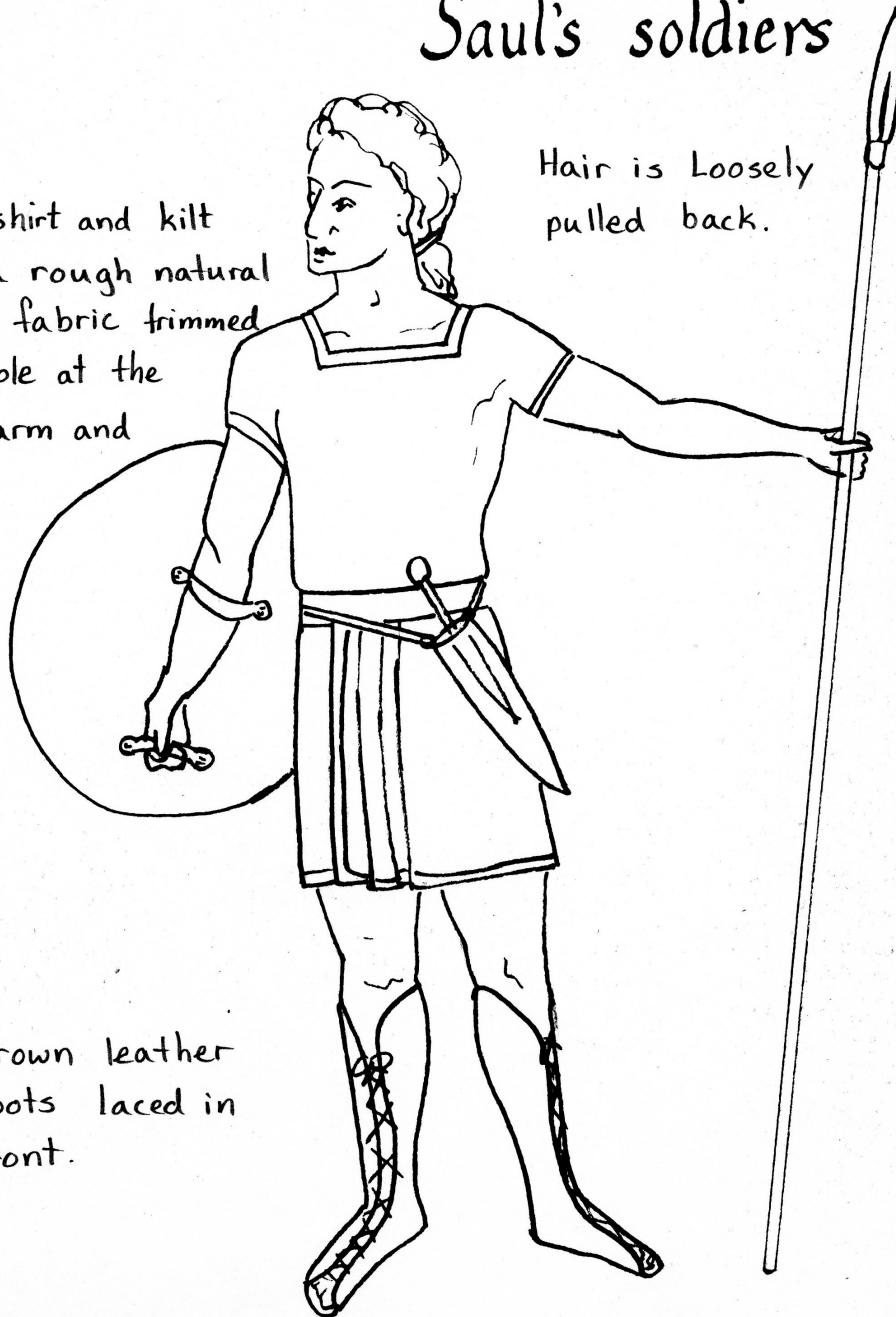
The dress is black gauze trimmed with purple. The belt is purple with many pink sashes.

# Saul's soldiers

The shirt and kilt are a rough natural white fabric trimmed in purple at the neck, arm and hem.

Hair is Loosely pulled back.

Brown leather boots laced in front.



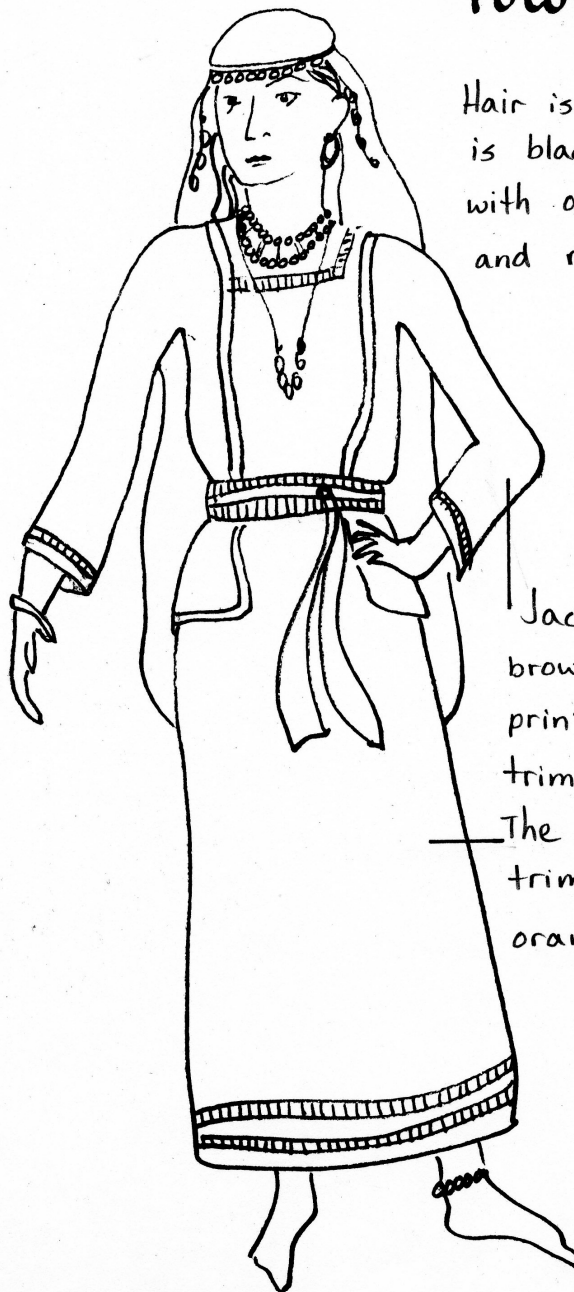


# Townsmen

Robe is brown or  
orange trimmed in  
green and orange.



# Townswoman

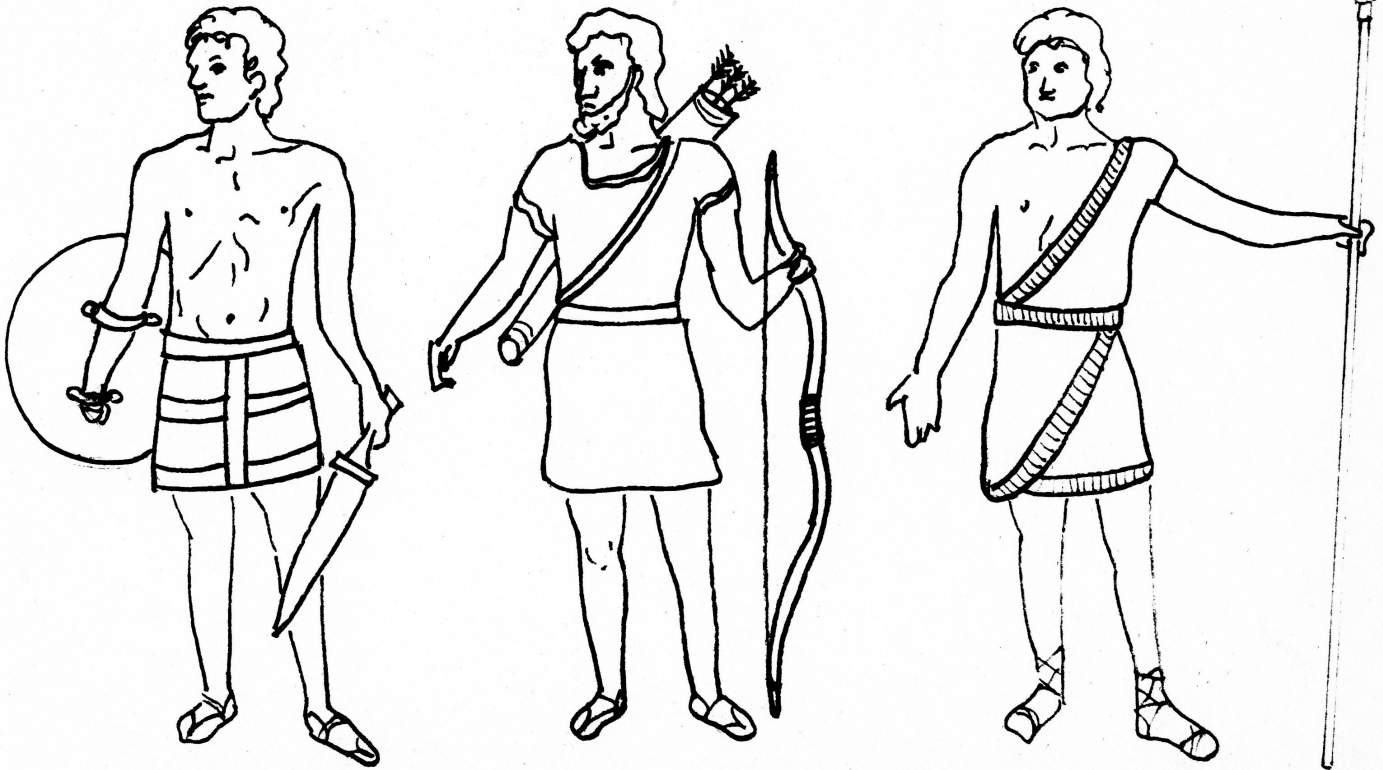


Hair is brown/black. Vail is black gauze trimmed with orange + green beads and ribbons.

Jacket is a green, brown and orange print (perhaps floral) trimmed in orange.

The dress is brown trimmed in green or orange.

All in brown, trimmed  
with orange or green.



David's men